

INSULATION MATTRESSES

MATECO 600

- MATECO® 600 is made of high quality technical fabrics : hight temperature glass fabric and rockwool.
- It's waterproof and it has a good mechanical resistance.
- It is classified accordind to Official Fire resistance standard (Incombustable), and it resists continuous temperatures up to 600°C.
- It's flexible, removable and customizable with your logo and contact details.

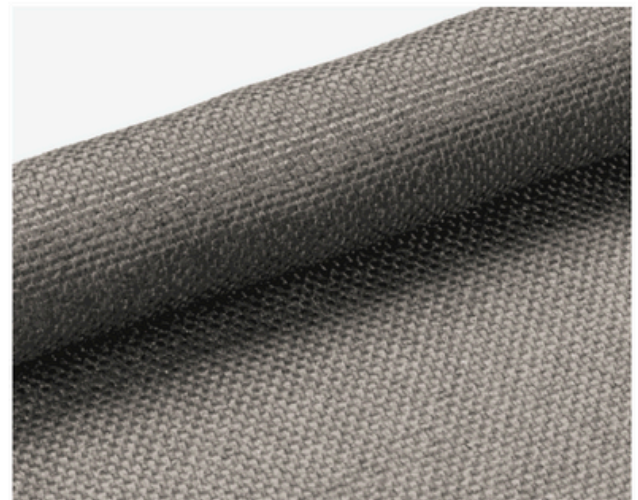


1. – Rockwool

Technical Features	Unit	Values	Standards
Fire rate	-	Euroclass A1 (non-combustible)	EN 13501-1
Max. Operating Temperature	°C	600	NF EN 14706 NF EN 14303
Max. Thermal Conductivity	λ (W/m.K)	0.044	NF EN 14303 NF EN ISO 13787
Density	Kg/m ³	65	NF EN 1602
Thickness	mm	63	NF EN 14303

2. – High-temperature-treated glass fabric

Technical feature	Unit	Values	Standards of reference
Thickness	mm	1	DIN ISO 4303/E
Color	-	Grey	-
Weight	g/m ²	650	DIN EN 12127
Temperature Resistance	°C	600	-



3. – Closing system

Stainless steel buckles + straps



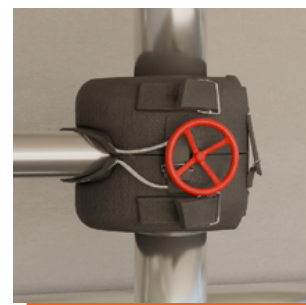
MATECO 600 - 2-WAYS VALVES



Reference	Indicative DN (Diameter Nomina)	Dimensions (mm)	Packing (items/box)
MATECO/600/02	DN15/20-2V	220 x 490	100
MATECO/600/03	DN25/40-2V	220 x 720	80
MATECO/600/04	DN50/65-2V	300 x 890	40
MATECO/600/05	DN80/100-2V	390 x 1100	30
MATECO/600/06	DN125-2V	530 x 1230	20
MATECO/600/07	DN150-2V	540 x 1440	15
MATECO/600/08	DN200/250-2V	540 x 1690	10
MATECO/600/09	DN300-2V	740 x 1750	10
MATECO/600/10	DN350-2V	940 x 1890	8
MATECO/600/11	DN400-2V	990 x 2040	8



MATECO 600 - 3-WAYS VALVES



Reference	Indicative DN (Diameter Nomina)	Dimensions (mm)	Packing (items/box)
MATECO/600/02-3	DN15/20-3V	220 x 490	80
MATECO/600/03-3	DN25/40-3V	260 x 720	55
MATECO/600/04-3	DN50/65-3V	390 x 890	35
MATECO/600/05-3	DN80/100-3V	430 x 1090	20
MATECO/600/06-3	DN125-3V	530 x 1220	15
MATECO/600/07-3	DN150-3V	530 x 1500	10
MATECO/600/08-3	DN200/250-3V	530 x 1750	10



MATECO 600 - FLANGES

Reference	Indicative DN (Diameter Nomina)	Dimensions (mm)	Packing (items/box)
MATECO/600/02-B	DN15/20	200 x 530	130
MATECO/600/03-B	DN25/40	200 x 720	80
MATECO/600/04-B	DN50/65	200 x 900	70
MATECO/600/05-B	DN80/100	200 x 1100	55
MATECO/600/06-B	DN125	200 x 1250	50
MATECO/600/07-B	DN150	200 x 1550	40
MATECO/600/08-B	DN200/250	200 x 1750	35

MATECO 600 HEAT EXCHANGEURS

Reference	Dimensions (mm)	Packing (items/box)
MATECO/600/01-EXC	380 x 610	20
MATECO/600/02-EXC	830 x 1370	6
MATECO/600/03-EXC	1130 x 1410	4

